



Belgian Pilot Project – Safety Offshore Workshop



This Project has received funding from the European Union's Horizon 2020 Research and Innovation Programme under Grant Agreement no 862915

WWW.H2020UNITED.EU   

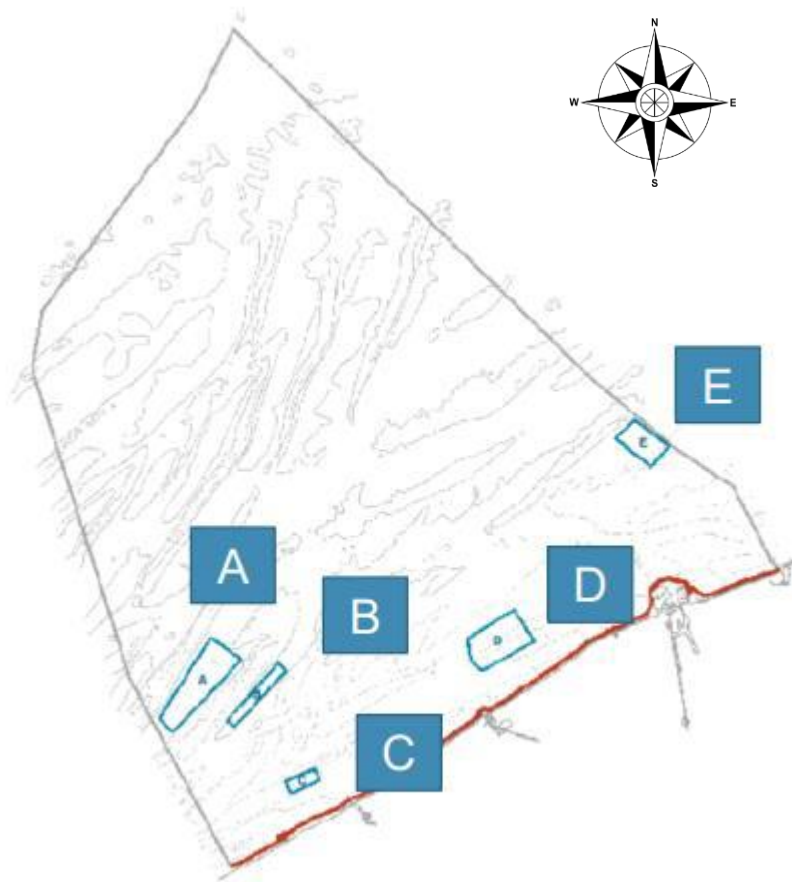
Objectives of the Belgian pilot

- Evaluation of wind farms as locations for restoring native flat oyster reefs in combination with culturing flat oysters for human consumption
- To compare growth of seaweed offshore and Nearshore

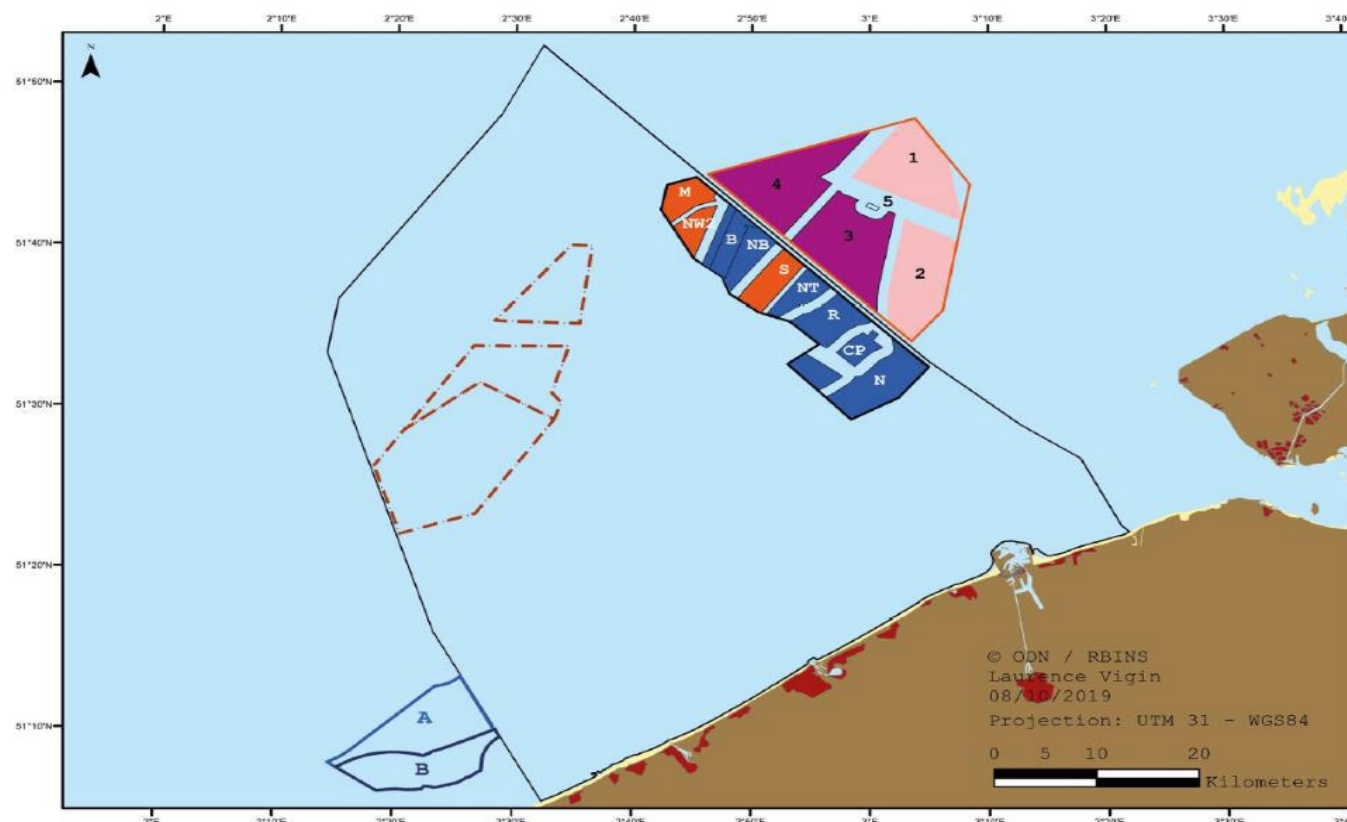


Activities and challenges

- Pre-operational phase



- Operational phase



Safety precautions – JDN standards



Training

- Training as per legislation and relevant offshore standards
 - ✓ IMO - STCW (Standards of Training, Certification & Watchkeeping for Seafarers)
 - ✓ GWO certified (Working at height, fire awareness, first aid, manual handling and sea survival including boat landing)
- JDN Training
 - ✓ Pre-start meetings
 - ✓ Toolbox meeting
 - ✓ Project induction
 - ✓ Drills
- Training in line with concession owner requirements

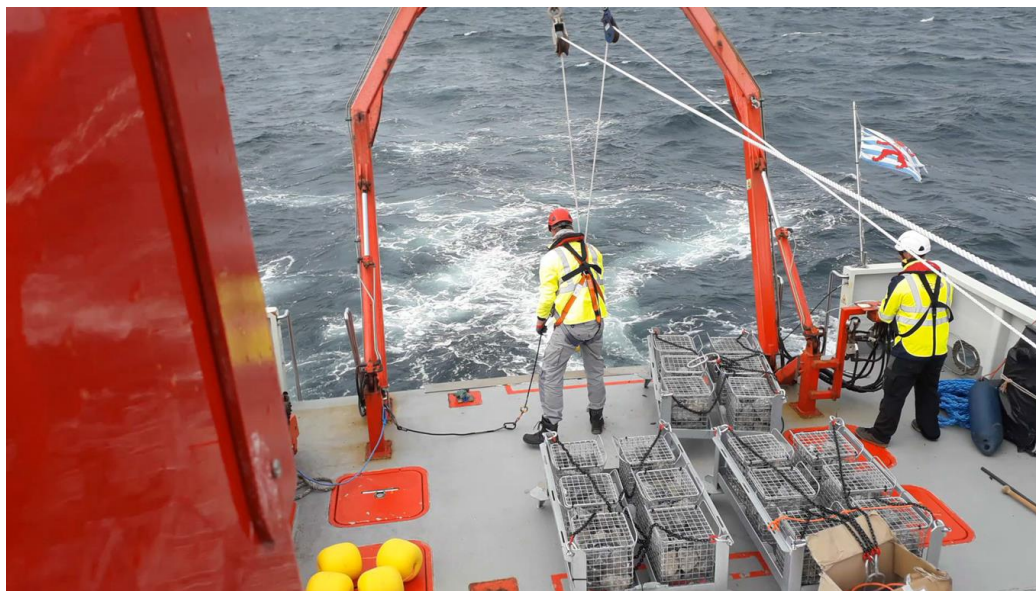


Safety precautions – JDN standards



Personnel Protective Equipment (PPE)

- Minimum PPE
 - ✓ Safety helmet
 - ✓ High visibility clothing (long sleeves, long trousers)
 - ✓ Safety shoes
 - ✓ Safety glasses
- Extra PPE
 - ✓ Task specific
 - ✓ Environmental impact
 - ✓ Concession owner
 - ✓ Manufacturer's instructions (when using a tool)
 - ✓ Communication at sea (walkie talkie)

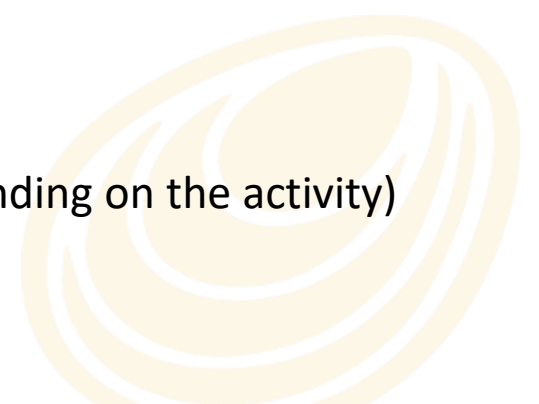


Access requirements – Parkwind



Vessel and personnel requirements to access a PWD concession:

- Vessel must be approved by Marine Coordination (MC) from Parkwind (PWD):
 - ✓ Vessel profile registered in Safe Offshore operationS (SOS) system: general vessel info, vessel documentation and certificates
 - ✓ Inspection of the vessel by HSSE auditor: vessel vetting procedure
- Vessel operations must comply with:
 - ✓ PWD QHSSE expectations (including Contractor's own Emergency Response Planning (ERP)
 - ✓ PWD MC procedure (incl. as sailing route, SOS procedures, work permit, personnel registration, transfer plan, PPE (Personal protective equipment) vessel and crew matrix...)
 - ✓ Blighbank ERP (Vessel ERP Bridging Documents)
- Personnel on board:
 - ✓ Profile approved in SOS system (personal info, documentation and certificates depending on the activity)
 - ✓ PWD inductions
 - ✓ Appropriate PPEs (depending on the activity)



Legal-administrative hurdles

Scientific experiment nearshore

- Permission to use site (NATURA 2000)
- Insurance (personnel + equipment)
- Correct signaling terrain (buoys)



In case commercial use nearshore

- Use permit (FOD Economy - decision Minister of Economy)
- Environmental permit (FOD Environment -> advice MUMM Scientific Service + possible objections to public opinion)



Extra measures offshore

- Wind farm permit
- Park owner's permission
- Permission to enter wind farm with ships, special training staff





Serving the Fishing- & Aquaculture Industries

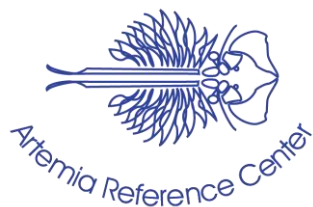


UNITED

WWW.H2020UNITED.EU



UGent-
Phycology
team



Nancy.Nevejan@UGent.be
Andclerc.Declercq@UGent.be

